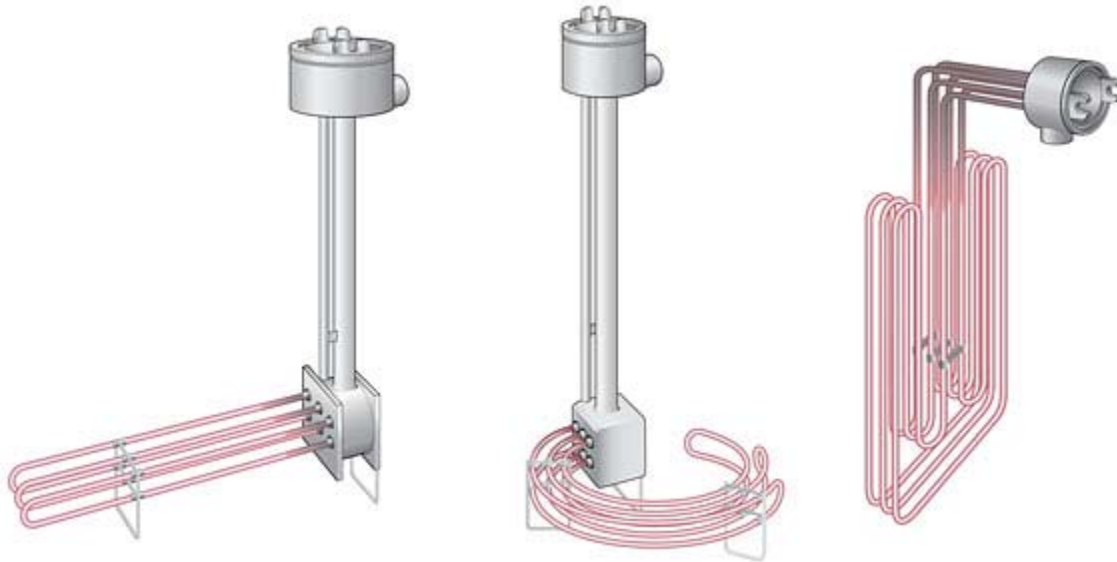




Over-The-Side Immersion Heaters



Over-The-Side immersion Heaters

Over-the Side Immersion Heater elements are designed for installation from the top of tanks where through-the-wall heaters cannot be installed. These Heaters are available in many configurations, with partially unheated sections, thermostats, wash down or corrosion resistant enclosures. Available with various sheath materials like 316 SS, Titanium, Copper, Steel, Incolloy, Teflon Coated or Quartz for acids. Can be made in various shapes and sizes and are normally designed for particular applications, however certain sizes are also available from stock.

Features:

- Portable and easily removable
- Lightweight in construction
- Variety of shapes available "Z" "O" "L" inverted "T" "M"
- Immersed along the side or the bottom of tank
- Self contained with built in thermostat or temperature sensors
- NEMA 4/4X enclosures for moisture protection
- Sheath materials for corrosive liquids, acids, caustic etc.

Specifications Design Capabilities:

Voltages. 120, 208, 240, 377, 480, 575, 600 volts
Phase. Single and three phase
Enclosures. NEMA 12, NEMA 4, NEMA 4X, NEMA 7,
Wattage's. 1 to 150 Kilowatts
Watt Densities. 7 to 60 watts/inch
Passivation. Provided for critical applications
Sludge Legs. Available 4" normal height
Sensors. Thermostats, RTD's, Thermocouples
Hi Limit. Thermocouple, Bulb & capillary
Multiple circuits. Possible with certain designs
Materials. Copper, Incoloy, 304/316 Stainless,
Titanium Teflon Coated, Steel



**National Plastic Heater,
Sensor and Control Inc.**

www.industrial-process-heaters.com

sales@industrial-process-heaters.com

Toll Free: 1-877-674-9744

Tel: 905-859-8225

Fax: 905-859-4691

Terms and conditions posted below apply:

<http://www.nphheaters.com/terms.htm>